

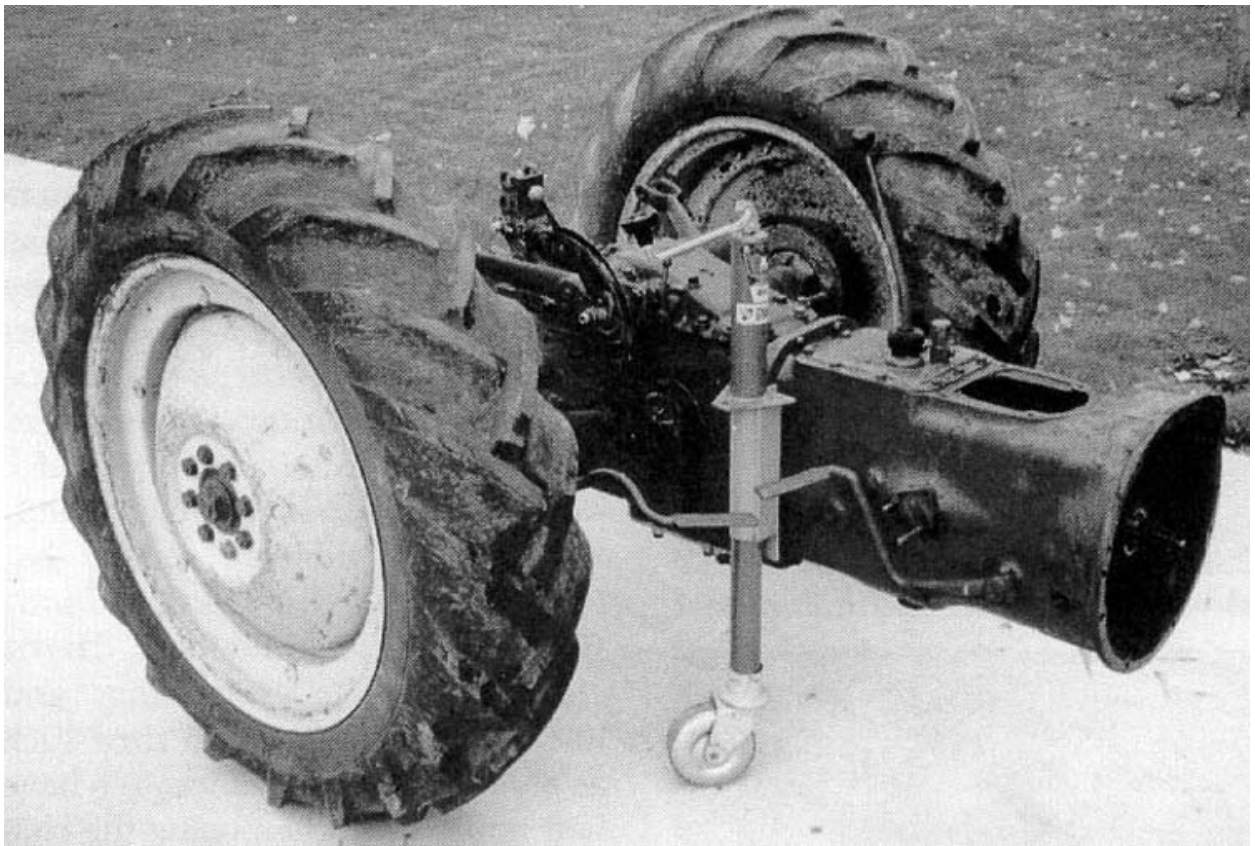
Jigs and Dollies for Splitting Your Tractor

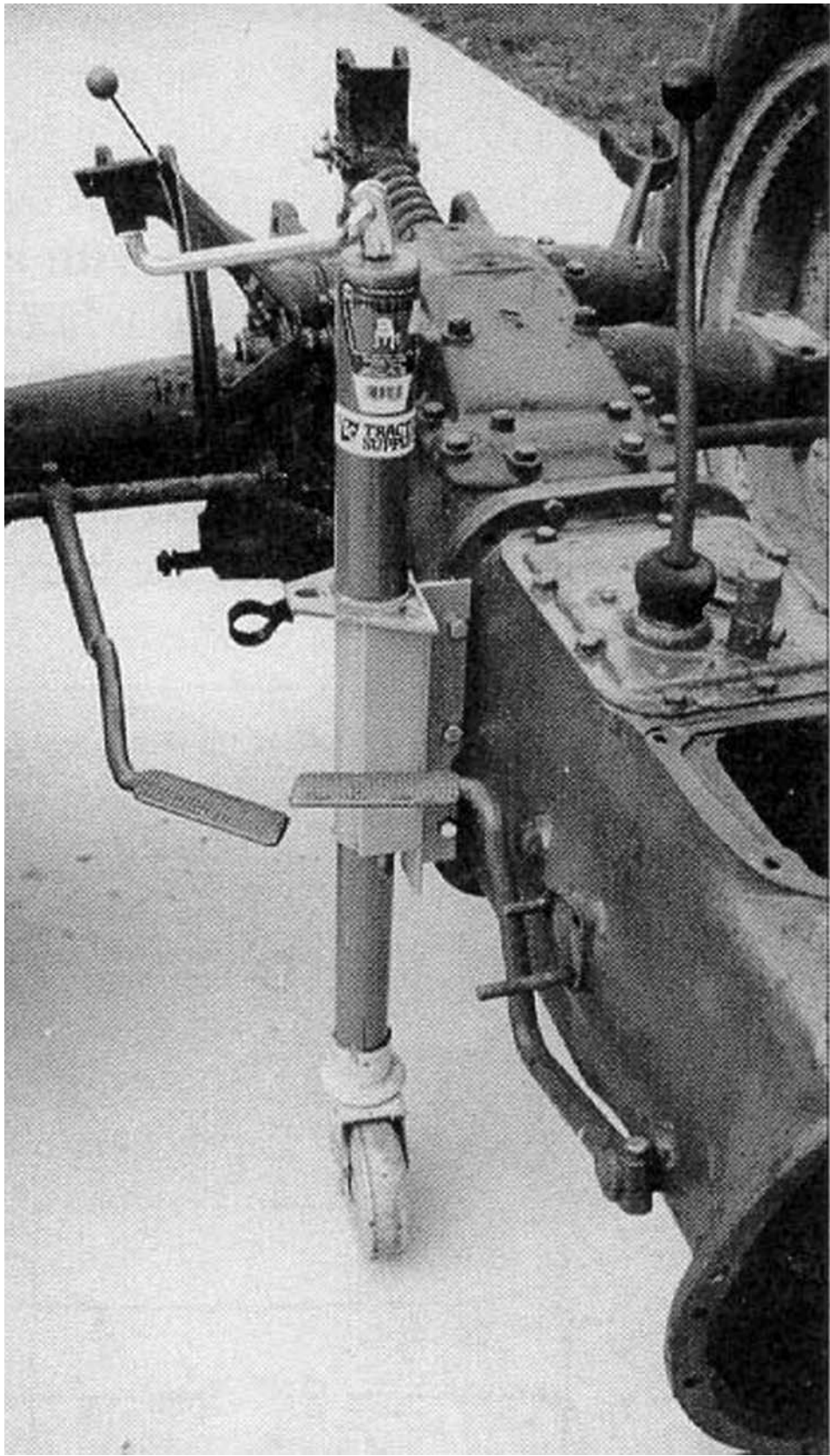
Contributors: Marvin Baumann, Ultradog MN, Patrick Knight, and Steve Dabrowski

Compiled and edited by: Ed Gooding

A number of people have come up with devices to help them split their tractors for service, and move around sections of their tractor by themselves. The following pictures and information show how a couple individuals, Ford Tractor and the K R Wilson tool company came up with solutions to do these tasks.

This may be one of the simplest jigs, and can be made with a standard trailer jack with a welded flange to attach to the housing holes on your tractor. This one was made by Marvin Baumann. You will note that it does require that the tractors wheels stay mounted so that you can fully maneuver the tractor once split:



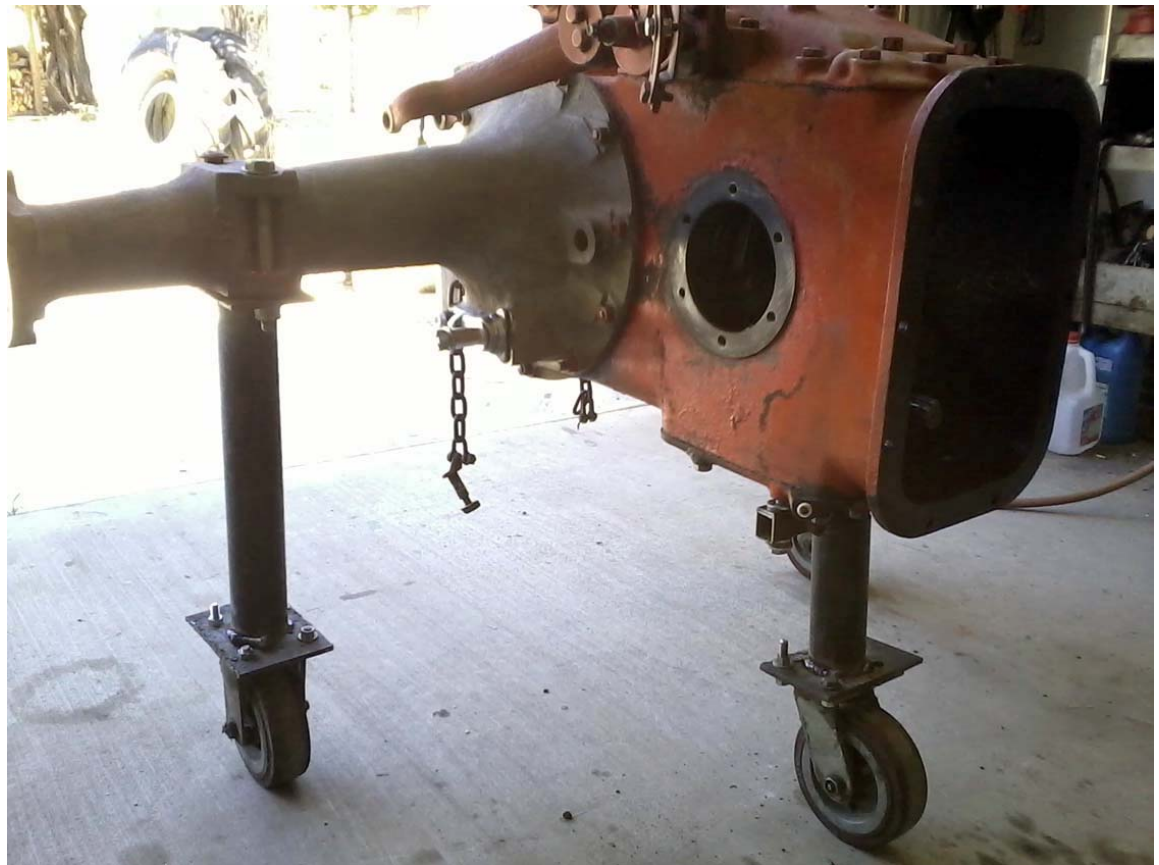


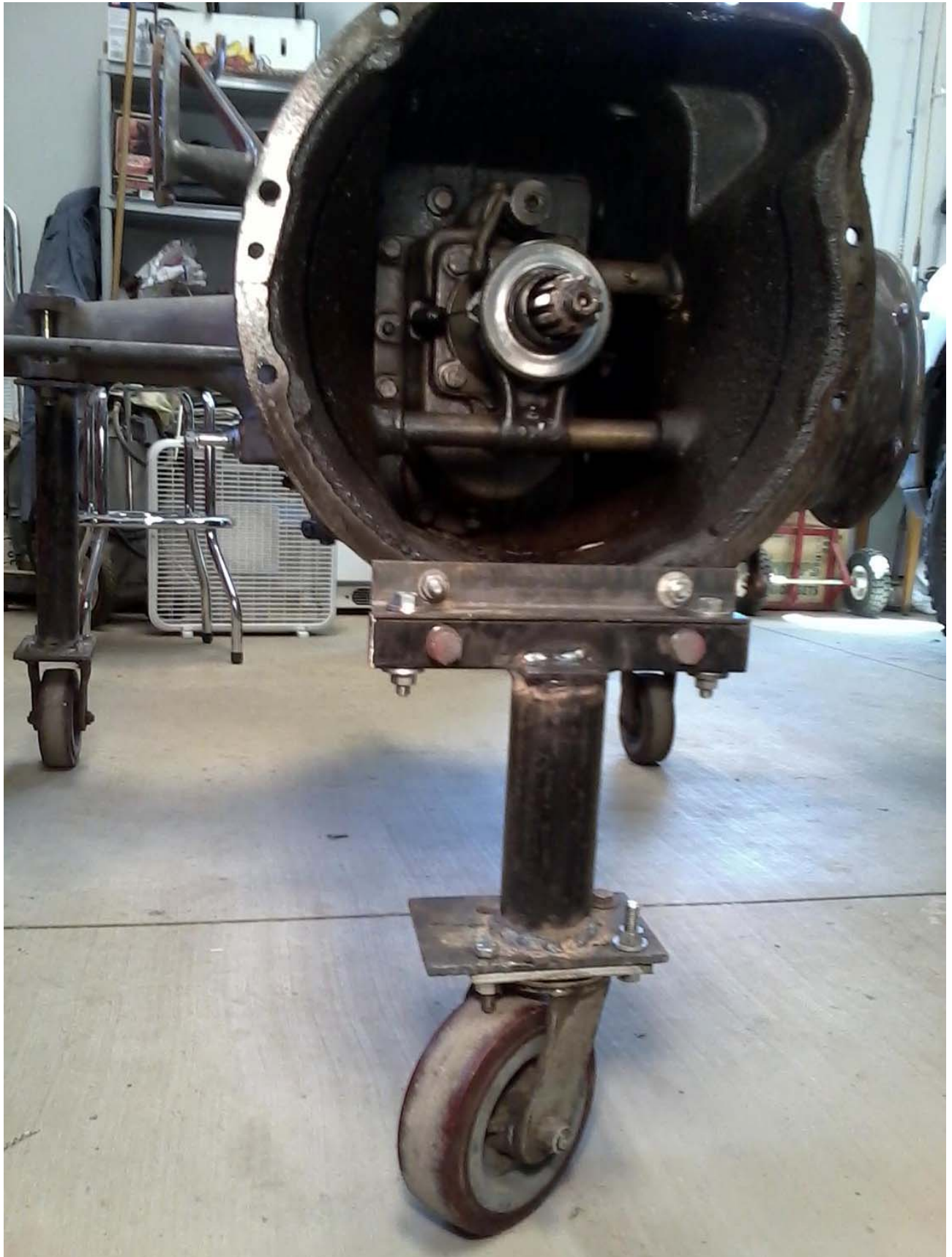
Ultradog MN, a long-time contributor to N Tractor Club discussions, shared this photo of a tractor roll-away stand that was originally intended to be sent with donated Ford tractors to high school automotive/tractor service training programs:

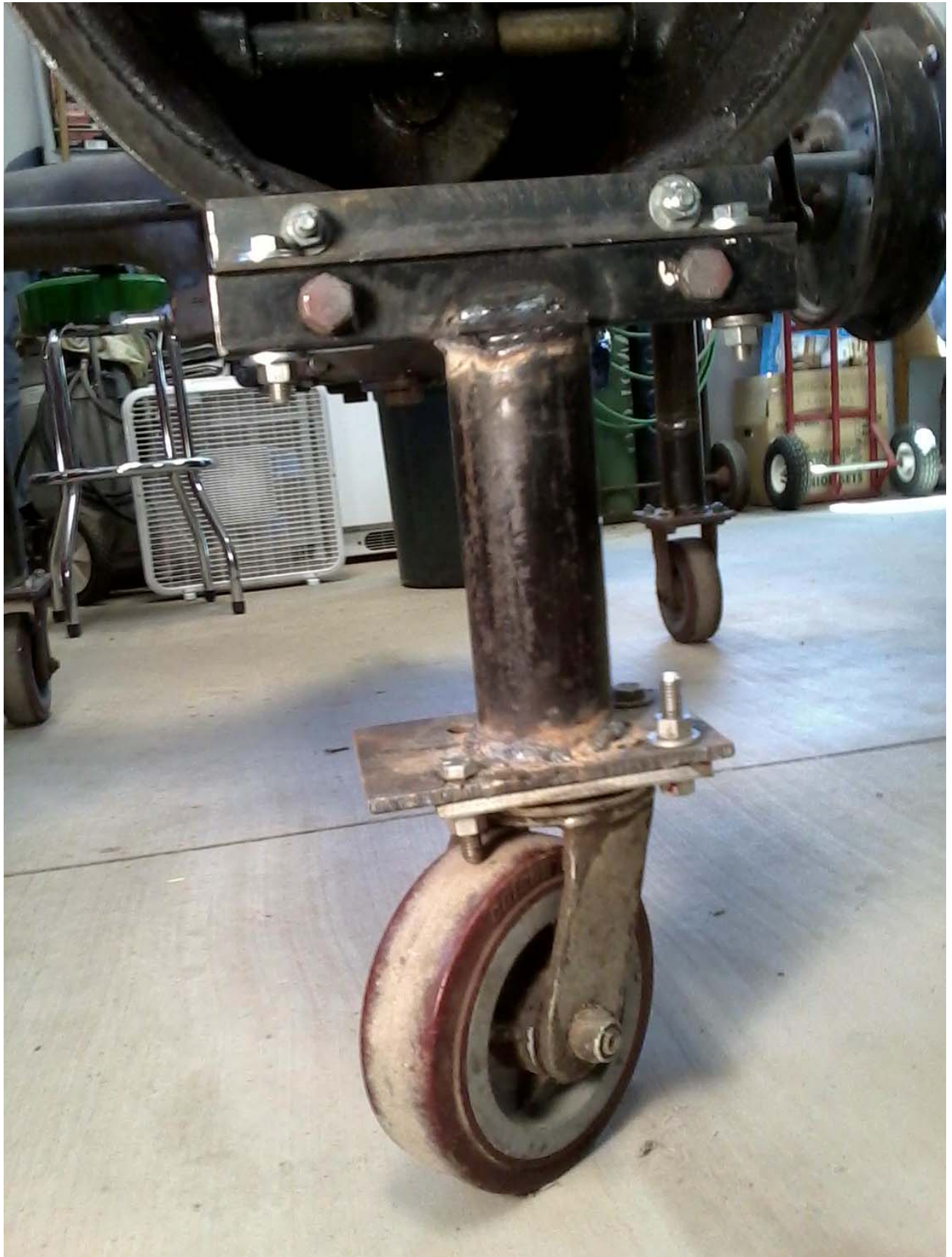


Patrick Knight, another contributor to the N Tractor Club, recently fabricated this simple but effective tractor mover device:









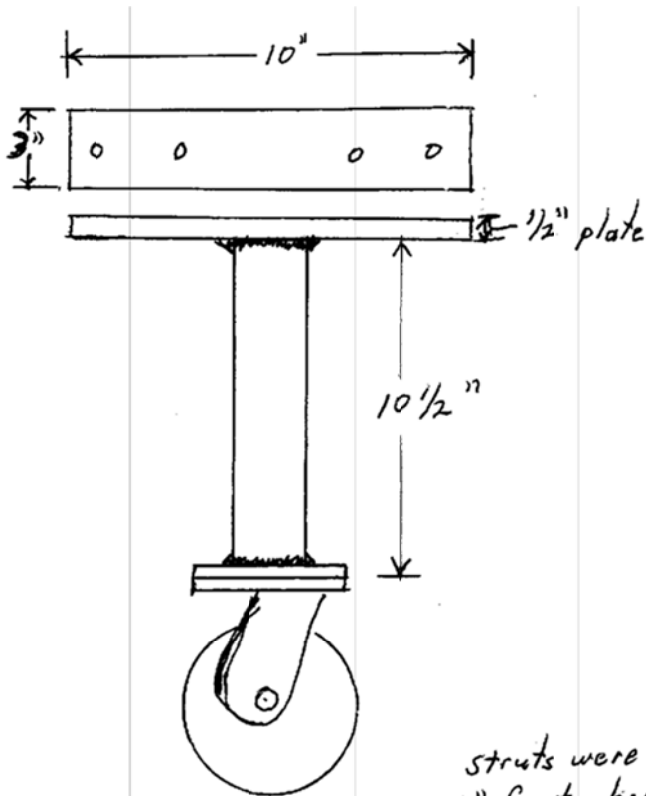






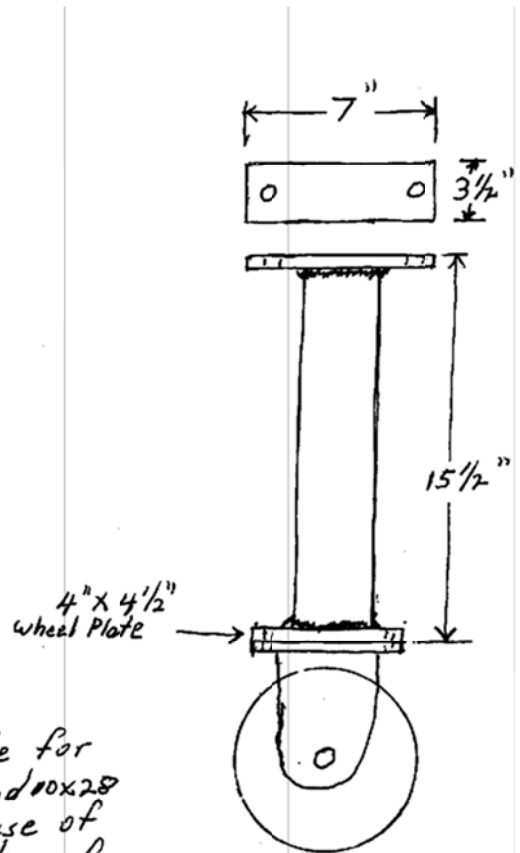






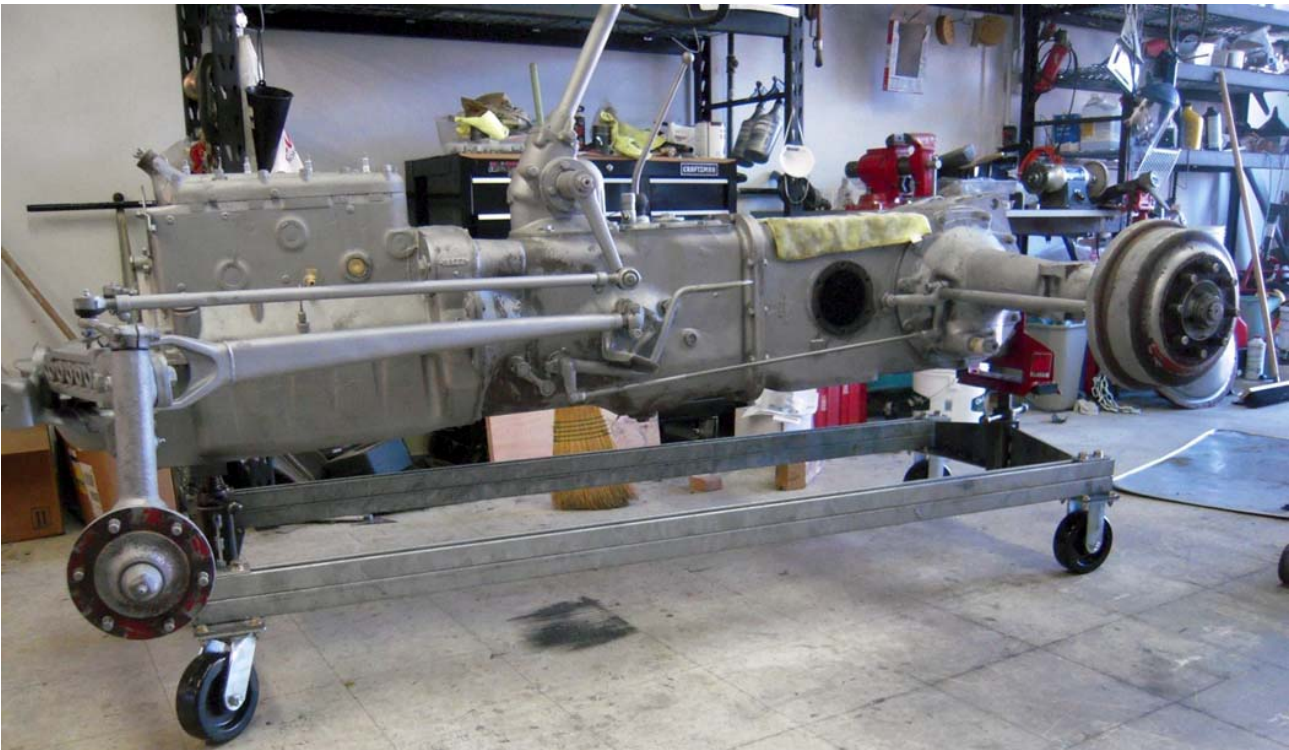
Front Strut
 2" black pipe
 1/2" top plate drilled
 as needed for angle iron
 adaptors.
 Colson 6x2 swivel wheel

struts were made for
 15" front wheels and 10x28
 rear wheels, for ease of
 removal & installation of
 wheels.



Rear Strut
 2" black pipe
 1/4" steel plate
 Colson 6x2 wheel

Steve Dabrowski fabricated this tractor dollie for his restoration efforts:



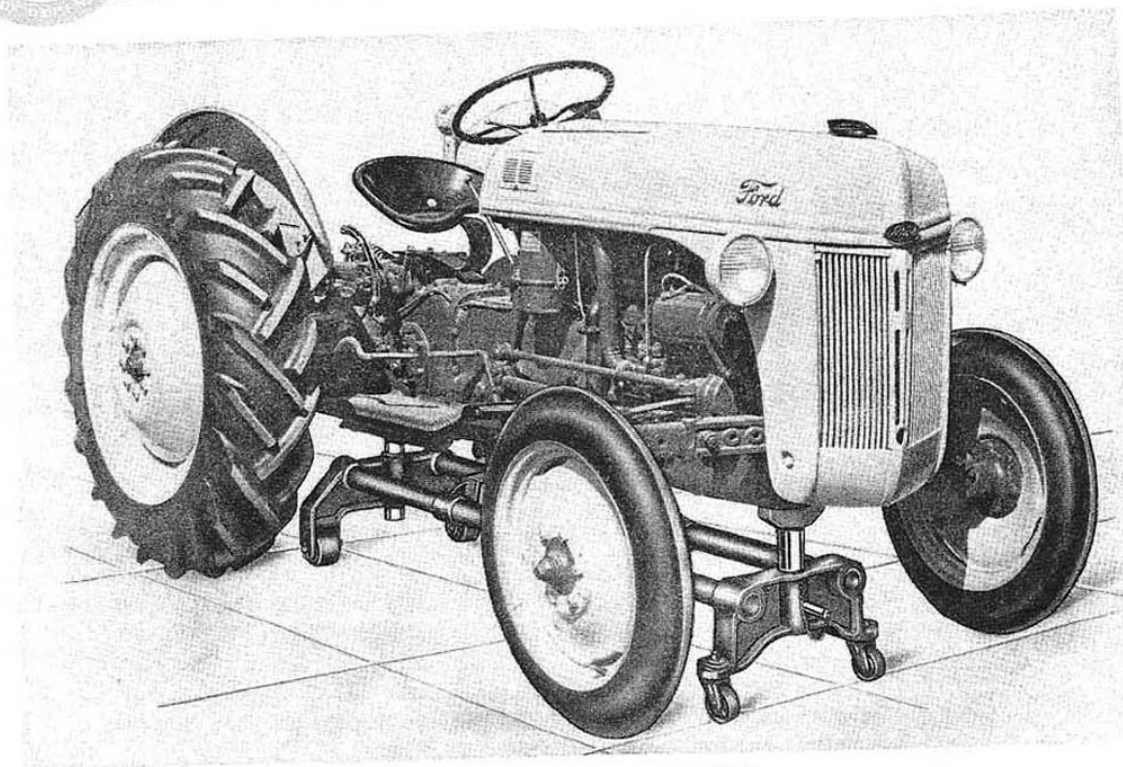




The K R Wilson Tool Company made many specialized tools with which to service Ford tractors. This is a device that they called an Assembly/Disassembly Dollie and was intended for use at Ford Tractor dealerships and commercial garages:



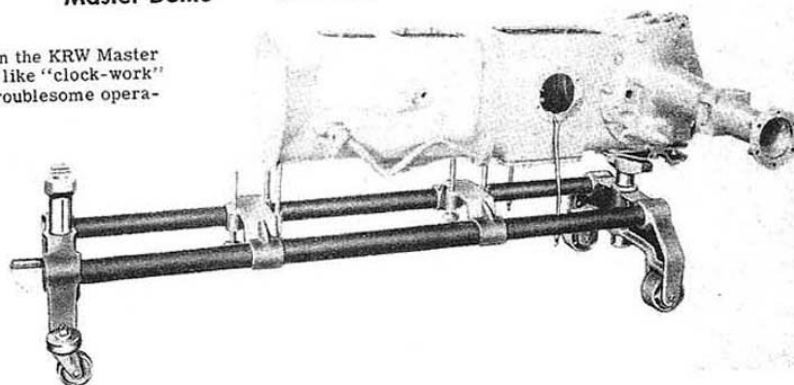
UNIT ASSEMBLY 8N FORD TRACTOR



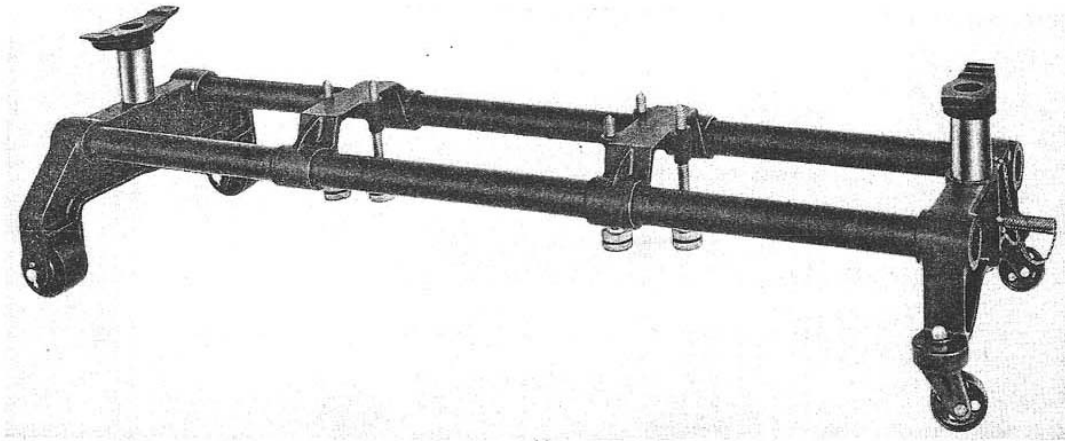
Master Dollie No. TR-1

Here is the Tractor completely re-assembled on the KRW Master Dollie. The various sub-assemblies went together like "clock-work" without fuss or bother. Simplifies an otherwise troublesome operation.

The illustration at the right shows the careful thought given to the design of the KRW Master Dollie. The Rear Axle Assembly is mounted and held in place ready to receive the Engine, Front Axle and Wheels. Each unit will align correctly with the other. Time saved on a few jobs, alone, will quickly pay for this labor saving portable dollie.



UNIT DISASSEMBLY 8N FORD TRACTOR



Master Dollie No. TR-1

The KRW Dollie speeds all disassembly and assembly operations. It eliminates the need for horses or other methods for supporting the component sections of the tractor. The Dollie holds the complete

assembly and also supports each section independently so that when disconnected it can be separated from the adjacent sections by sliding it on the two heavy guide bars. It remains in alignment during service operations and can be pushed back to its original position for quick and easy reassembly. The complete tractor when supported on the Dollie can be moved easily to desired location. It's safe. It is designed to save you time and money.

Pat 1949 K.R. Wilson, Buffalo, N.Y.

Here is another commercially available tractor splitting dolly:

